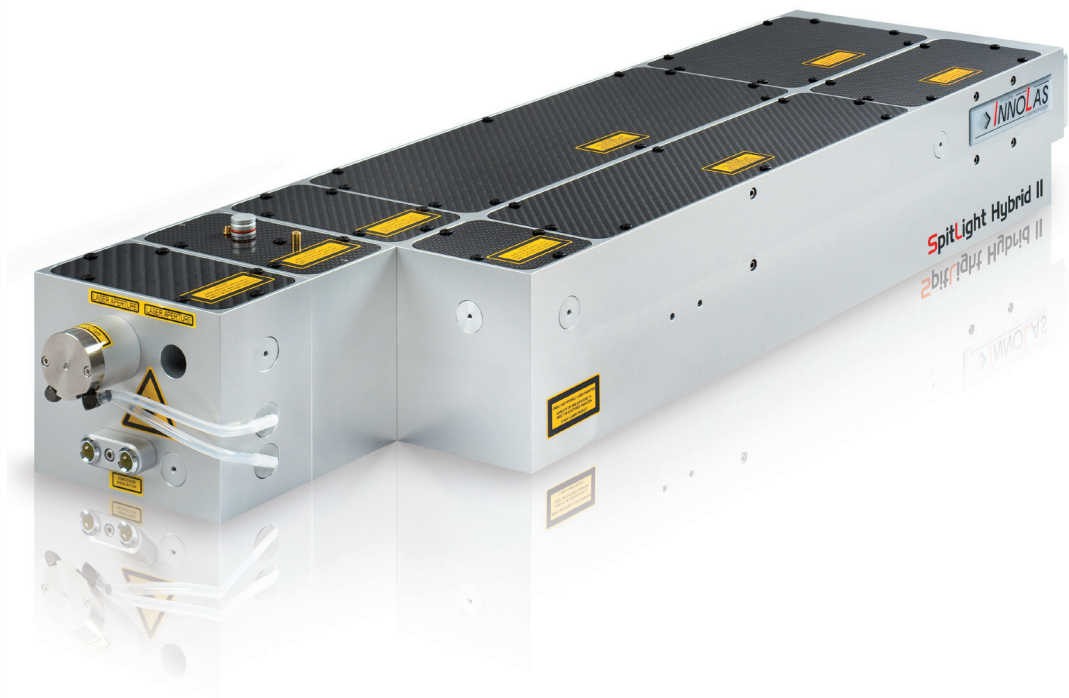


## SpitLight Hybrid

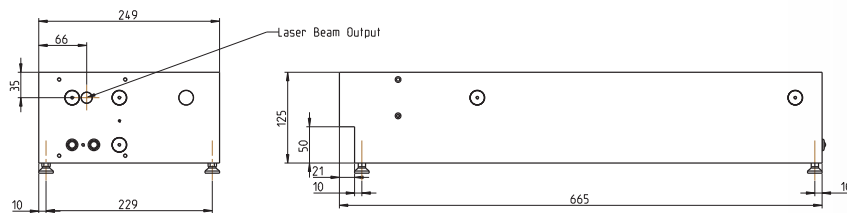


### Features

- \* Compact laser head and power supply with small footprint
- \* Robust and stable resonator structure
- \* Quick and easy change of flashlamps
- \* Maintenance-free pumping chamber with ceramic reflector
- \* Excellent beam quality and pointing stability
- \* Long flashlamp lifetime
- \* Double pulse option available
- \* System can be injection seeded (SLM-Option)

# SpitLight Hybrid

Model		SpitLight Hybrid I	SpitLight Hybrid II	SpitLight Hybrid III
Laser Parameters	Repetition Rate	Product available from 1 to 200 Hz (Following specifications are for <b>50 Hz</b> )		
Energy	Pulse Energy at 1,064 nm	> 250 mJ	> 450 mJ	> 800 mJ
	Pulse Energy at 532 nm	> 125 mJ	> 250 mJ	> 350 mJ
	Pulse Energy at 355 nm	> 70 mJ	> 125 mJ	> 250 mJ
	Pulse Energy at 266 nm	> 40 mJ	> 70 mJ	> 100 mJ
	Pulse Energy at 213 nm	> 6 mJ	> 10 mJ	> 15 mJ
	Energy Stability at 1,064 nm (RMS)	< 1.0%	< 1.0%	< 2.0%
	Energy Stability at 532 nm (RMS)	< 2.0%	< 2.0%	< 3.5%
	Energy Stability at 355 nm (RMS)	< 2.5%	< 2.5%	< 5.0%
Beam Parameters	Pulse Width at 1,064 nm	10-12 ns	10-12 ns	8-10 ns
	Divergence	< 0.5 mrad	< 0.5 mrad	< 0.5 mrad
	Pointing Stability	< ± 50 µrad	< ± 50 µrad	< ± 50 µrad
	Beam Diameter	6 mm	6 mm	7 mm
	Temporal Jitter	< ± 1 ns	< ± 1 ns	< ± 1 ns
Operating Parameters	Lamp Lifetime	> 20,000,000 shots	> 20,000,000 shots	> 20,000,000 shots
	Diode Lifetime	2 years/2 billion shots*	2 years/2 billion shots*	2 years/2 billion shots*
	Electrical Supply	208/400 VAC (3 phase), 50/60 Hz, 5.0 kW	208/400 VAC (3 phase), 50/60 Hz, 5.0 kW	208/400 VAC (3 phase), 50/60 Hz, 5.0 kW
	Cooling Water	8 l/min; 2-6 bar; < 15 °C	8 l/min; 2-6 bar; < 15 °C	8 l/min; 2-6 bar; < 15 °C
Weights	Laser Head	25 kg	25 kg	25 kg
	Power Supply	50 kg	50 kg	50 kg
Dimensions	Laser Head (in infrared) (L x W x H)	665 x 250 x 125 mm	665 x 250 x 125 mm	665 x 250 x 125 mm
	Power Supply (L x W x H)	560 x 400 x 425 mm	560 x 400 x 425 mm	560 x 400 x 425 mm



InnoLas follows a policy of continuous product improvement. All specifications are subject to change without notice. All specifications at 1,064 nm unless otherwise noted. \* 2 years after installation or 2 billion shots – whichever comes first

InnoLas Laser GmbH is DIN EN ISO 9001 certified.



**InnoLas Laser GmbH** | Justus-von-Liebig-Ring 8 | 82152 Krailling | Germany  
Phone: +49 (89) 899 360 - 1400 | Fax: +49 (89) 899 360 - 1499  
E-mail: info@innolas-laser.com | Homepage: www.innolas-laser.com

