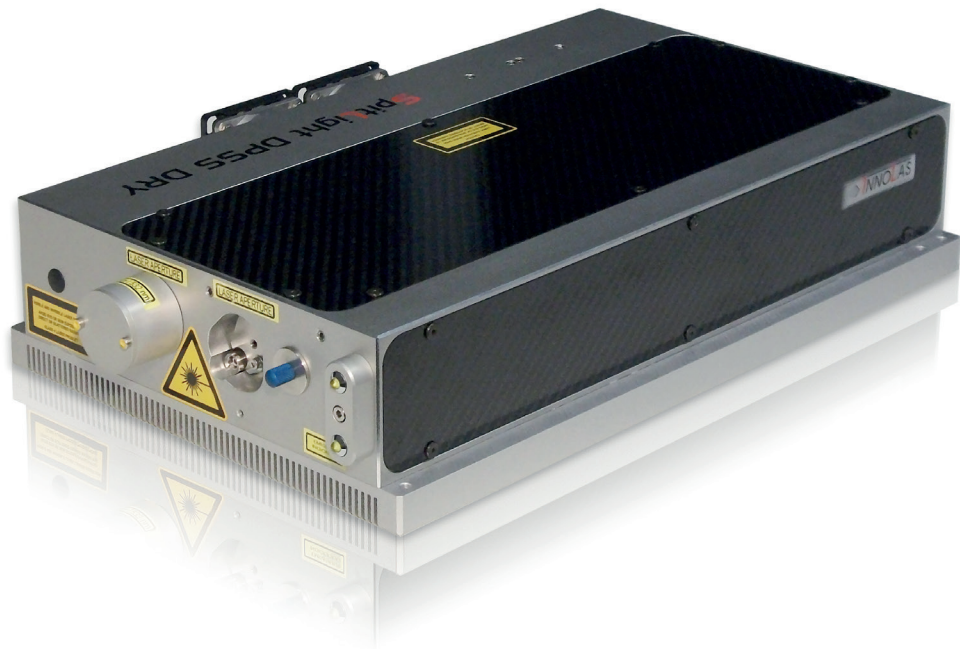


## Spitlight DPSS DRY



### Features

- \* No internal/external water cooling
- \* All-in-one: Integrated power supply
- \* Low voltage supply input
- \* Wide temperature range
- \* Robust and stable monolithic design
- \* Easy to integrate

# Spitlight DPSS DRY

Model	DPSS DRY 2	DPSS DRY 4
Repetition rate	The following specifications are for 10 Hz	
<b>Pulse Energy [mJ]</b>		
Pulse Energy at 1,064 nm	> 80 mJ	> 150 mJ
Pulse Energy at 532 nm	> 40 mJ	> 80 mJ
Pulse Energy at 355 nm	> 20 mJ	> 50 mJ
Energy Stability at 1,064 nm (RMS)	< 0.3%	< 0.3%
Energy Stability at 532 nm (RMS)	< 1.0%	< 0.8%
Energy Stability at 355 nm (RMS)	< 2.0%	< 1.5%
<b>Beam Parameters</b>		
Beam Diameter 1,064 nm	4.0 mm	5.5 mm
Divergence	< 0.5 mrad	< 0.5 mrad
Pointing Stability	< ± 20 µrad	< ± 20 µrad
M <sup>2</sup>	< 4	< 4
Pulse Duration (1,064 nm)	6 – 10 ns	6 – 10 ns
Temporal Jitter	1 ns	1 ns
<b>Operating Parameters</b>		
Warranted Diode Lifetime	2 years / 2 x 10 <sup>9</sup> shots*	2 years / 2 x 10 <sup>9</sup> shots*
Cooling System	Integrated peltier / air	Integrated peltier / air
Electrical Supply	Integrated (20 – 36 V / max. 400 W)	Integrated (20 – 36 V / max. 400 W)
<b>Weights and Dimensions</b>		
Dimensions Laser Head (L x W x H)	425 x 270 x 92 mm	425 x 270 x 92 mm
Weight Laser Head	18 kg	18 kg

InnoLas follows a policy of continuous product improvement. All specifications are subject to change without notice.

\* 2 years after installation or 2 billion (2 x 10<sup>9</sup>) shots – whichever comes first

InnoLas Laser GmbH is DIN EN ISO 9001 certified.



**InnoLas Laser GmbH** | Justus-von-Liebig-Ring 8 | 82152 Krailling | Germany  
Phone: +49 (89) 899 360 - 1400 | Fax: +49 (89) 899 360 - 1499  
E-mail: info@innolas-laser.com | Homepage: www.innolas-laser.com

