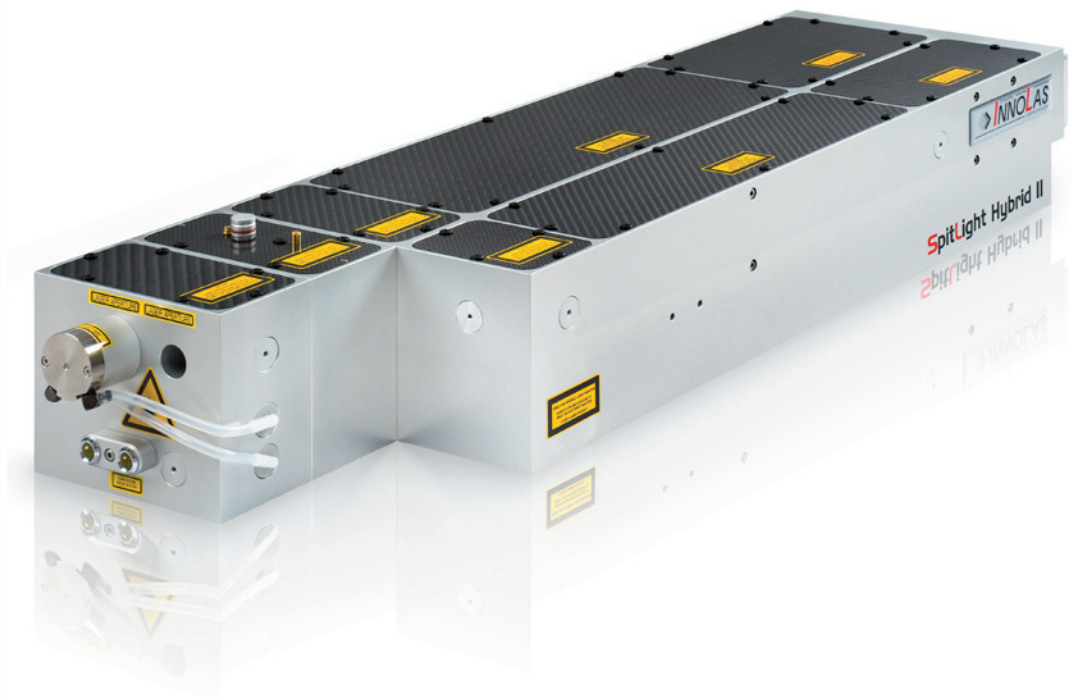


SpitLight Hybrid

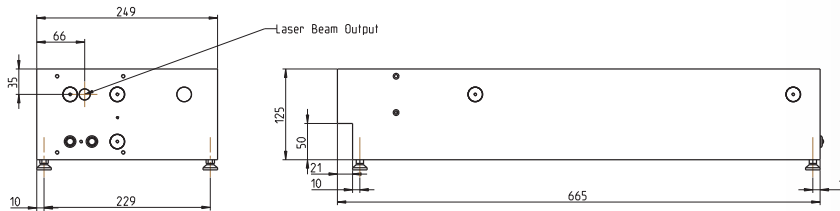


Features

- * Compact laser head and power supply with small footprint
- * Robust and stable resonator structure
- * Quick and easy change of flashlamps
- * Maintenance-free pumping chamber with ceramic reflector
- * Excellent beam quality and pointing stability
- * Long flashlamp lifetime
- * Double pulse option available
- * System can be injection seeded (SLM-Option)

SpitLight Hybrid

Model		SpitLight Hybrid I	SpitLight Hybrid II	SpitLight Hybrid III
Laser Parameters	Repetition Rate	Product available from 1 to 200 Hz (Following specifications are for 50 Hz)		
Energy	Pulse Energy at 1,064 nm	> 250 mJ	> 450 mJ	> 800 mJ
	Pulse Energy at 532 nm	> 125 mJ	> 250 mJ	> 350 mJ
	Pulse Energy at 355 nm	> 70 mJ	> 125 mJ	> 250 mJ
	Pulse Energy at 266 nm	> 40 mJ	> 70 mJ	> 100 mJ
	Pulse Energy at 213 nm	> 6 mJ	> 10 mJ	> 15 mJ
	Energy Stability at 1,064 nm (RMS)	< 1.8%	< 1.8%	< 2.0%
	Energy Stability at 532 nm (RMS)	< 2.2%	< 2.2%	< 2.5%
	Energy Stability at 355 nm (RMS)	< 2.5%	< 2.5%	< 3.0%
Beam Parameters	Pulse Width at 1,064 nm	10-12 ns	10-12 ns	8-10 ns
	Divergence	< 0.5 mrad	< 0.5 mrad	< 0.5 mrad
	Pointing Stability	< ± 100 µrad	< ± 100 µrad	< ± 100 µrad
	Beam Diameter	6 mm	6 mm	7 mm
	Temporal Jitter	< ± 1 ns	< ± 1 ns	< ± 1 ns
Operating Parameters	Lamp Life Time	> 20,000,000 shots	> 20,000,000 shots	> 20,000,000 shots
	Diode Life Time	10 ⁹ shots	10 ⁹ shots	10 ⁹ shots
	Electrical Supply	380 VAC, 50 Hz, 5.0 Kw	380 VAC, 50 Hz, 5.0 Kw	380 VAC, 50 Hz, 5.0 Kw
	Cooling Water	8 l/min; 2-6 bar; < 15 °C	8 l/min; 2-6 bar; < 15 °C	8 l/min; 2-6 bar; < 15 °C
Weights	Laser Head	25 kg	25 kg	25 kg
	Power Supply	50 kg	50 kg	50 kg
Dimensions	Laser Head (in infrared) (L x W x H)	665 x 250 x 125 mm	665 x 250 x 125 mm	665 x 250 x 125 mm
	Power Supply (L x W x H)	560 x 400 x 425 mm	560 x 400 x 425 mm	560 x 400 x 425 mm



InnoLas follows a policy of continuous product improvement. All specifications are subject to change without notice. All specifications at 1,064 nm unless otherwise noted.

InnoLas Laser GmbH is DIN EN ISO 9001 certified.



InnoLas Laser GmbH | Justus-von-Liebig-Ring 8 | 82152 Krailling | Germany
Phone: +49 (89) 899 360 - 0 | Fax: +49 (89) 899 360 - 16
E-mail: info@innolas-laser.com | Homepage: www.innolas-laser.com

