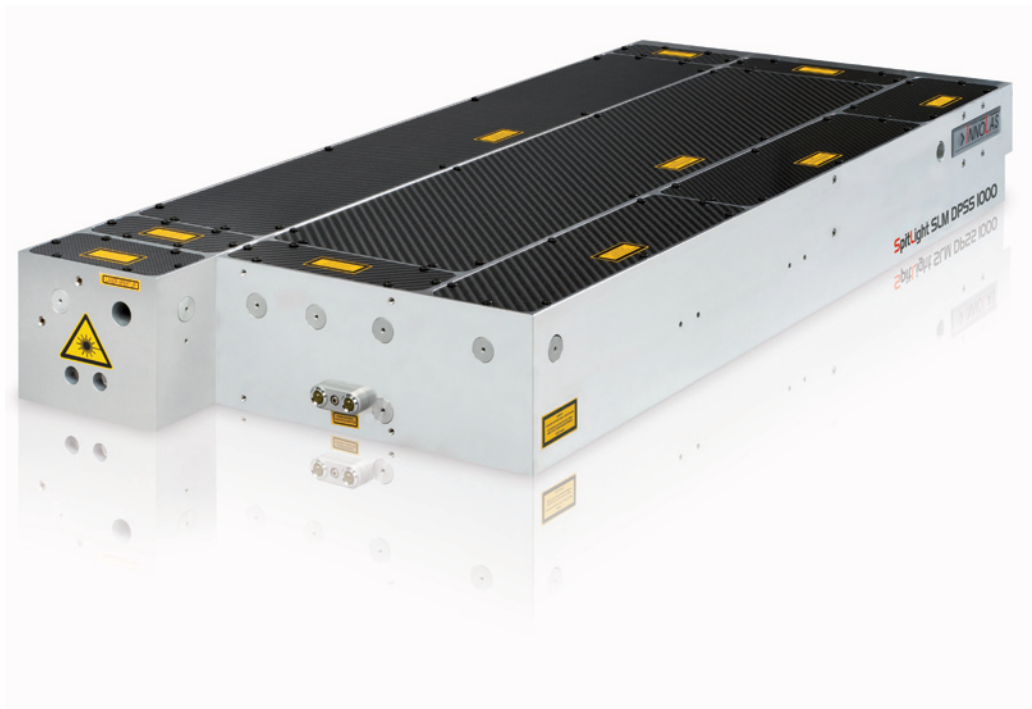


SpitLight DPSS 500 and 1000

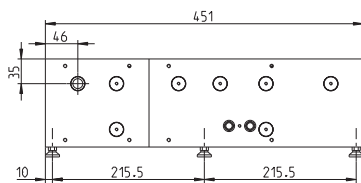


Features

- * High energy at high repetition rates
- * Excellent long term reliability of performance
- * Compact laser head and power supply with small footprint
- * Robust and stable resonator structure
- * Maintenance-free pumping chamber with ceramic reflector
- * Excellent beam quality and pointing stability
- * Double pulse option available
- * System can be injection seeded (SLM-Option)

SpitLight DPSS 500 and 1000

Model		SpitLight DPSS 500	SpitLight DPSS 1000
Laser Parameters	Repetition Rate	100 Hz	100 Hz
Energy	Pulse Energy at 1,064 nm	> 500 mJ	> 850 mJ
	Pulse Energy at 532 nm	> 230 mJ	> 400 mJ
	Pulse Energy at 355 nm	> 110 mJ	> 200 mJ
	Pulse Energy at 266 nm	> 40 mJ	> 70 mJ
	Pulse Energy at 213 nm	> 10 mJ	> 15 mJ
	Energy Stability at 1,064 nm (RMS)	< 0.6%	< 0.6%
	Energy Stability at 532 nm (RMS)	< 1.1%	< 1.1%
	Energy Stability at 355 nm (RMS)	< 1.5%	< 1.5%
Beam Parameters	Pulse Width at 1,064 nm	8-10 ns	8-10 ns
	Divergence	< 0.5 mrad	< 0.5 mrad
	Pointing Stability	< ± 50 µrad	< ± 50 µrad
	Beam Diameter	6 mm	7 mm
	Temporal Jitter	< ± 1 ns	< ± 1 ns
Operating Parameters	Diode Lifetime	> 10 ⁹ shots	> 10 ⁹ shots
	Electrical Supply	two each 230 VAC, 50 Hz, 2.5 Kw	two each 230 VAC, 50 Hz, 2.5 Kw
	Cooling Water	8 l/ min; 2-6 bar; < 15 °C	8 l/ min; 2-6 bar; < 15 °C
Weights	Laser Head	40 kg	60 kg
	Power Supply	two each 50 kg	two each 50 kg
Dimensions	Laser Head (in infrared) (L x W x H)	950 x 304 x 125 mm	950 x 451 x 125 mm
	Power Supply (L x W x H)	two each 560 x 400 x 425 mm	two each 560 x 400 x 425 mm



InnoLas follows a policy of continuous product improvement. All specifications are subject to change without notice. All specifications at 1,064 nm unless otherwise noted.

InnoLas Laser GmbH is DIN EN ISO 9001 certified.



InnoLas Laser GmbH | Justus-von-Liebig-Ring 8 | 82152 Krailling | Germany
Phone: +49 (89) 899 360 - 0 | Fax: +49 (89) 899 360 - 16
E-mail: info@innolas-laser.com | Homepage: www.innolas-laser.com

